

# Mining Warrior

## SWE600F

◆Operating weight: 51.2~51.8t ◆Engine power: 300kW/1800rpm ◆Bucket capacity: 3.2m<sup>3</sup>



### ● Stronger powertrain

The high-power engine is supported by a large-displacement primary pump to solve difficulties in heavy-duty mining operations.

### ● Better adaptability

Independent radiator for the hydraulic liquid, multi-stage fuel filter system and super-high engine power. It can work at a high altitude and in extremely cold environment of mining operations.

### ● Easier maintenance

Easy-to-access repair space and centrally arranged maintenance parts with centralized lubrication and inflator optional, making the maintenance much easier.

### ● Higher reliability

Super-strong hydraulic power components and heavy-duty driving wheel, guide wheel, track roller, supporting roller and track. The five main structural parts can be used for more than 20,000h with high reliability and durability.



# SWE600F

# Main Technical Parameters

## Features and specifications

### Specifications

Operating weight	t	51.2~51.8
Bucket capacity	m <sup>3</sup>	3.2

### Engine

Brand	ISUZU	
Model	6WG1XKSC-01	
Type	Four-stroke, turbocharger, intercooled, direct injection	
Power	kW/rpm	300/1800
Maximum torque	N·m/rpm	1932/1400
Displacement	L	15.681

### Hydraulic System

Type of main pump	2 variable displacement piston pumps	
Maximum flow of main pump	L/min	2×414
System pressure	MPa	31.4/34.3
Type of pilot pump	1 gear pump	
Maximum flow of pilot pump	L/min	27
Pressure of pilot pump	MPa	3.9

### Performance

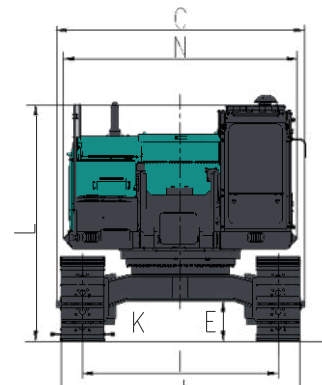
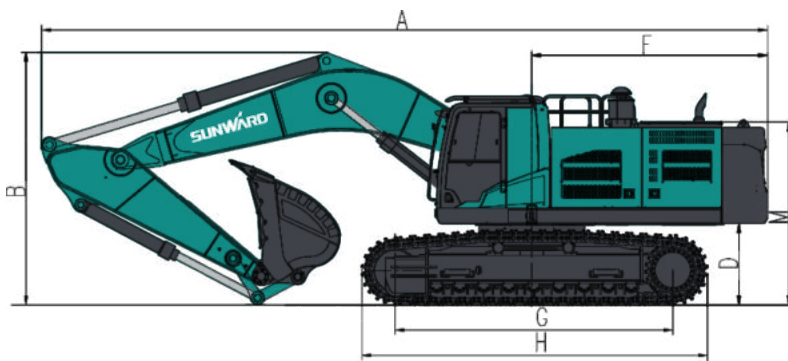
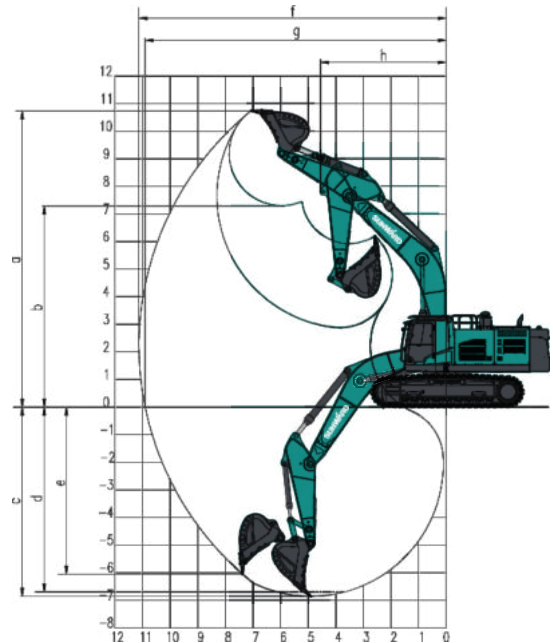
Rotating speed	rpm	8.6
Traceling speed	km/h	4.8/3.0
Gradeability	°	35
Track width	mm	600
Ground pressure	kPa	87

### Tank Volume

Fuel tank volume	L	850
Hydraulic liquid tank volume	L	520

## Working range and digging capacity

a	Max. digging height	mm	10740
b	Max. unloading height	mm	7290
c	Max. digging depth	mm	6860
d	Digging depth (2.44m horizontal)	mm	6700
e	Max. vertical digging depth	mm	6000
f	Max. digging distance	mm	11130
g	Max. digging reach at ground level	mm	10910
h	Min. front swing radius	mm	4550
Digging force of bucket (ISO supercharging)		kN	297
Digging force of arm (ISO supercharging)		kN	261



## Dimensions

Boom length	mm	6400	G	Ground contact length of track	mm	4410	
Arm length	mm	2900	H	Track length	mm	5490	
A	Overall length	mm	11535	I	Track gauge	mm	2740
B	Overall height	mm	4080	J	Track width	mm	3340
C	Overall width	mm	3480	K	Width of track link	mm	600
D	Ground clearance of counterweight	mm	1290	L	Cab height	mm	3310
E	Minimum ground clearance	mm	560	M	Height of machine hood	mm	2900
F	Tail swing radius	mm	3750	N	Width of turntable	mm	3270

★ The above parameters may change due to product update

**SUNWARD INTELLIGENT EQUIPMENT CO.,LTD.**

Add: Sunward Industrial Park, No. 1335 Liangtang Road (E), Xingsha, Changsha, Hunan, China.  
E-mail: [internationa@sunward.cc](mailto:internationa@sunward.cc) Web: <http://global.sunward.com.cn/>

**SUNWARD**